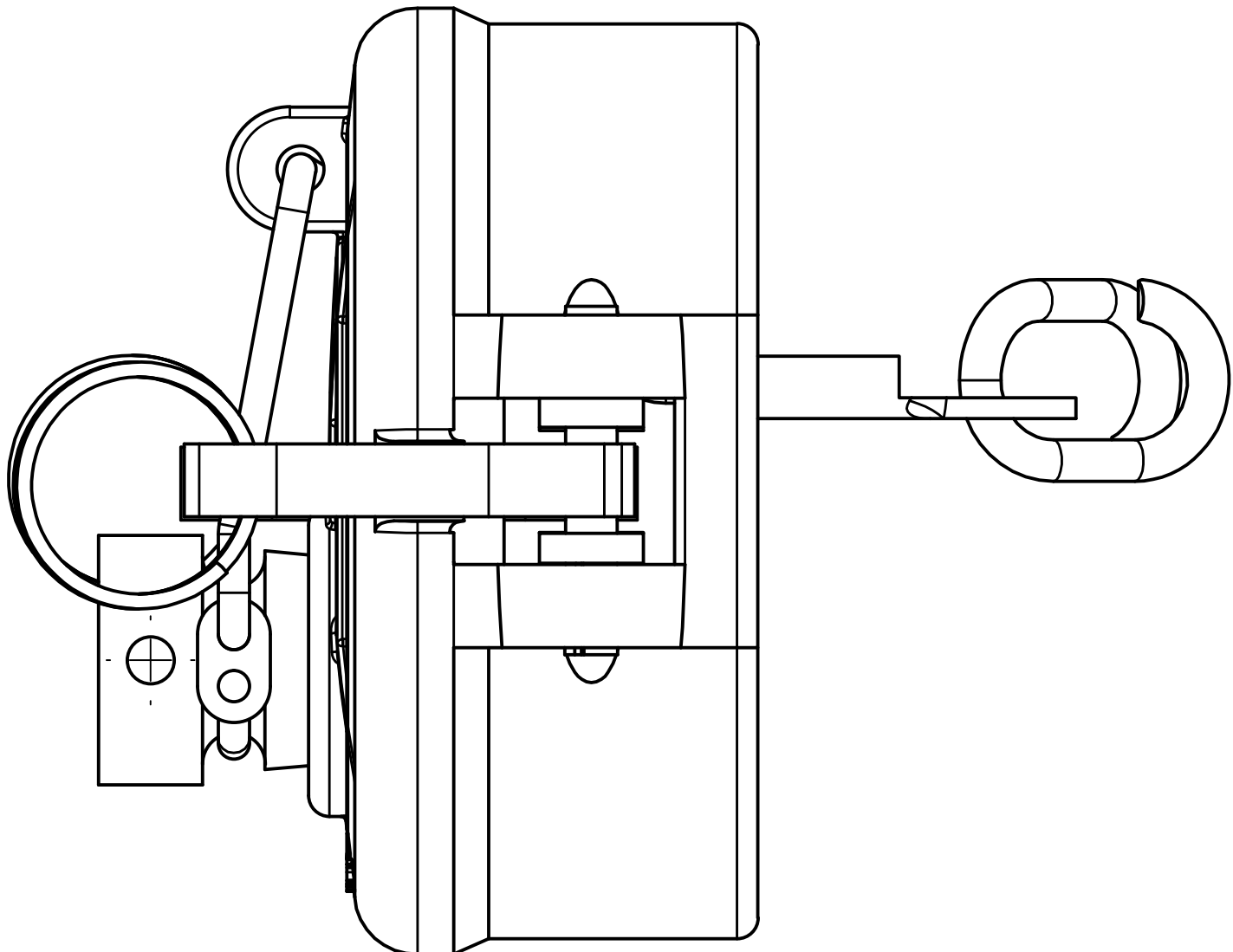
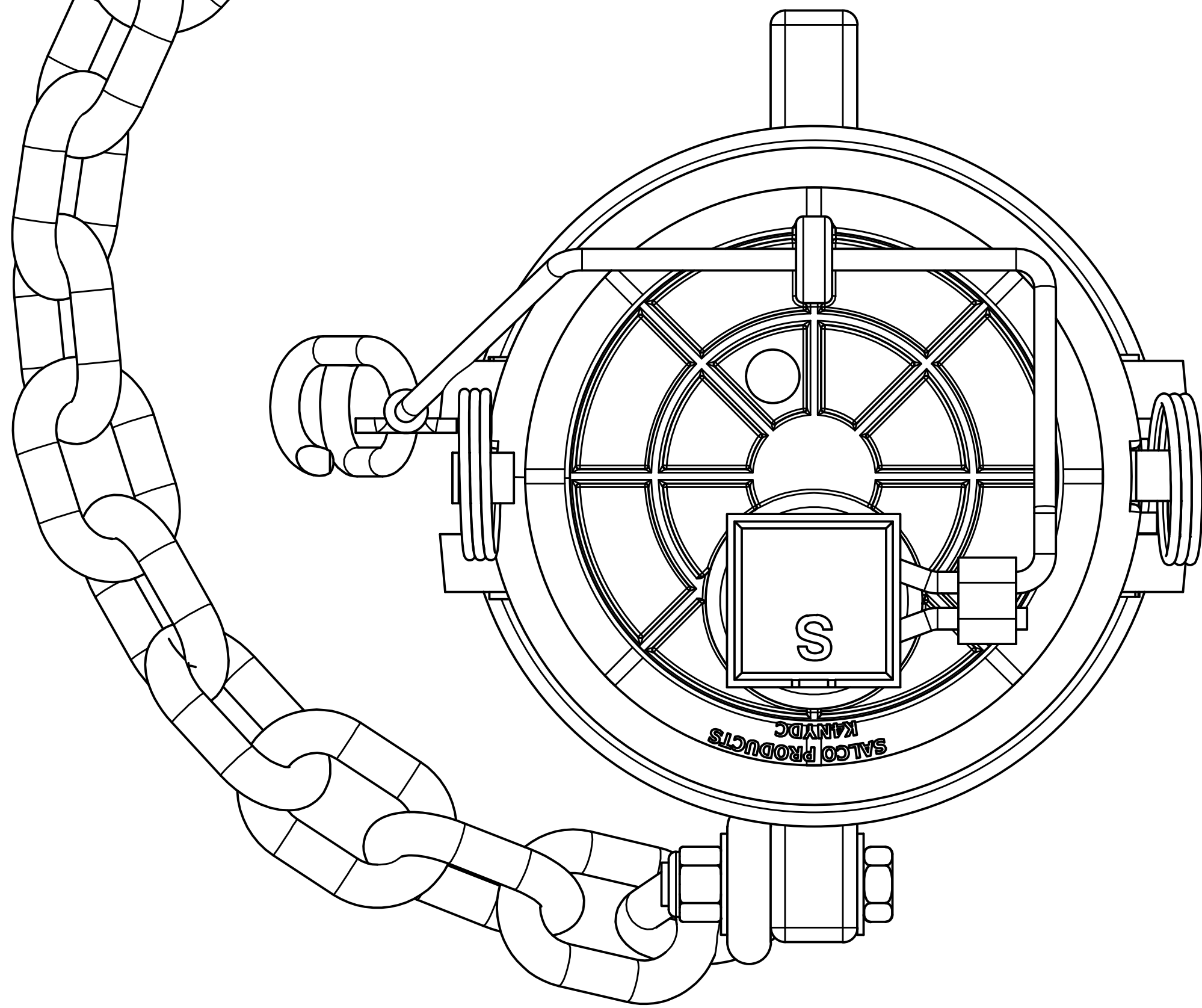


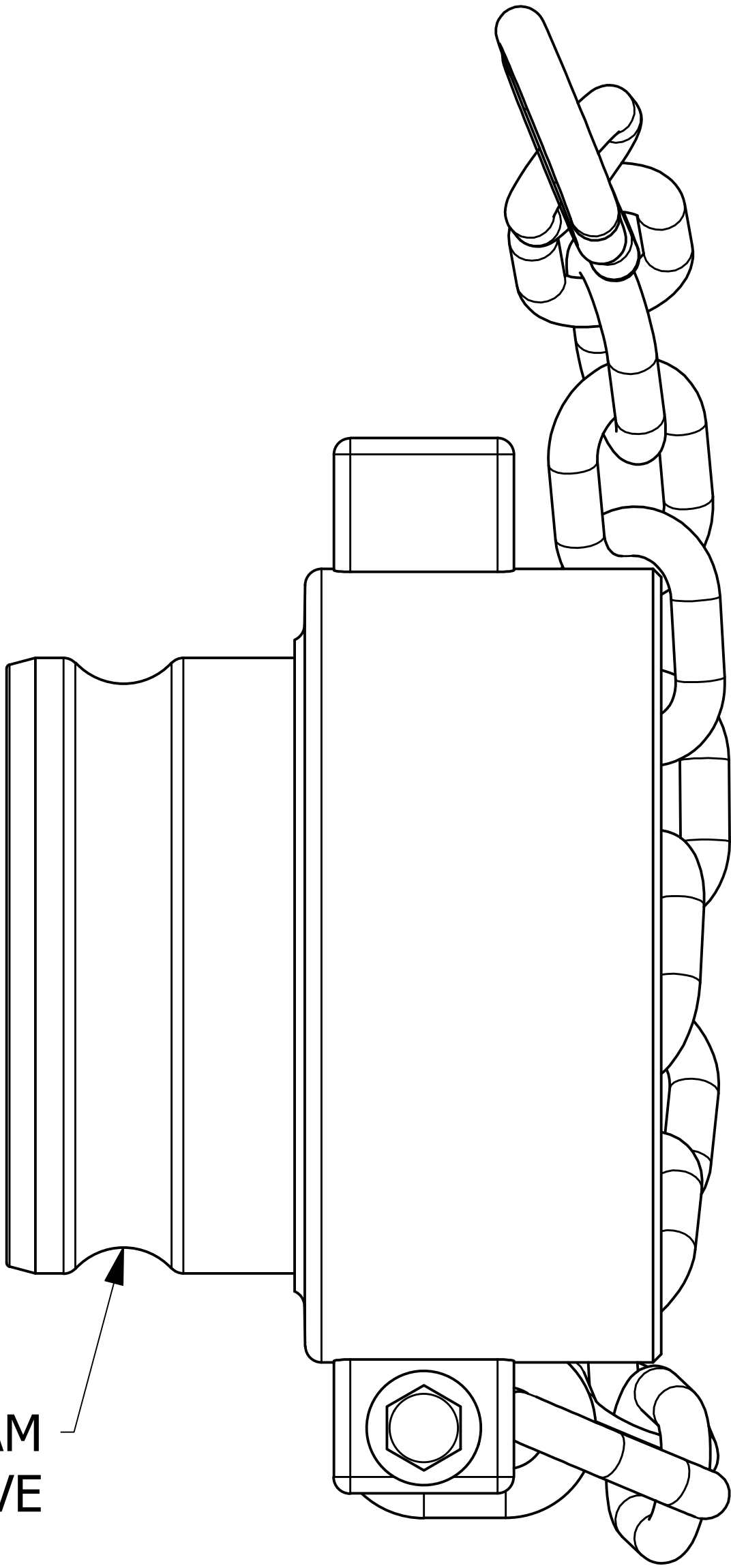
SALES DRAWING SALES DRAWING SALES DRAWING

15 LINKS OF 3/8" 18-8 SS CHAIN
APPROXIMATE LENGTH: 21"

S-HOOK
SHIPS
LOOSE



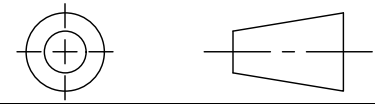
4" CAM
GROOVE



NOTES:

1. 5-1/4" - 4 UN 2B THREADS CONFORM TO ANSI B1.1 STANDARD AND FIGURE E18 FROM AAR TANK CAR MANUAL.
2. THIS ASSEMBLY IS NOT DOT APPROVED AND CAN BE USED ONLY ON AAR STENCILED CARS.
3. QUICK DISCONNECT MEETS A-A-59326D.
4. ADAPTER IS 316 SS GRADE CF-8M ASTM A351/A743.
5. FLANGE AAR APPROVAL # E-232133.
6. CAP AAR APPROVAL # E-232131.
7. GASKETS ARE SULFUR-CURED BLACK EPDM.

UNLESS OTHERWISE SPECIFIED
DIMENSIONAL TOLERANCES
FRACTIONAL: ±1/16
X.XX: ±.03
X.XXX: ±.015
ANGULAR: ±1°
DEBURR ALL SHARP EDGES.
ALL MACHINED SURFACES TO
HAVE A 125 RMS FINISH
UNLESS NOTED OTHERWISE.
THIRD ANGLE PROJECTION



DRAWN BY:	CHL
CHECKED BY:	ACC
PROTOTYPE DATE:	2/18/2003
APPROVED FOR PRODUCTION BY:	ACC
PRODUCTION DATE:	2/18/2003
SIZE:	D
DRAWING #:	17508

C REV	WEB BY	6/6/24 DATE	202501291603 REF #	WEB PUB
SALCO PRODUCTS, INC.				
PART NAME: QUICK CONNECT 4" THREAD ON				
MATERIAL: SEE NOTES				
PROJECT #: R141230			SHEET #: 1 OF 1	SCALE: 1:1
PART #: K4NYSU3A				

SALES DRAWING SALES DRAWING SALES DRAWING